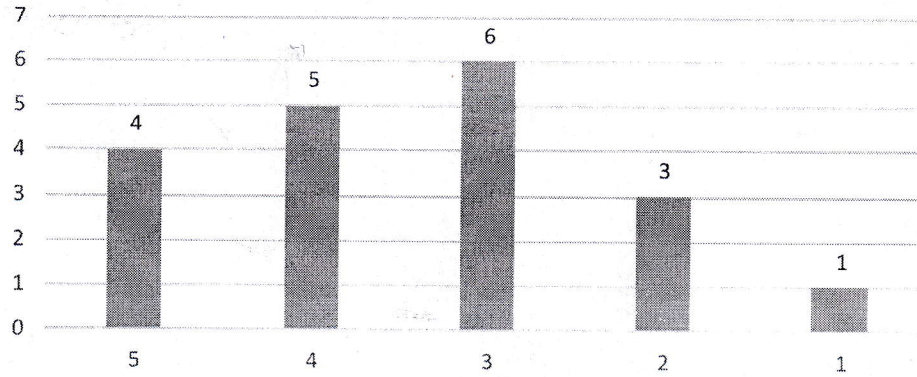


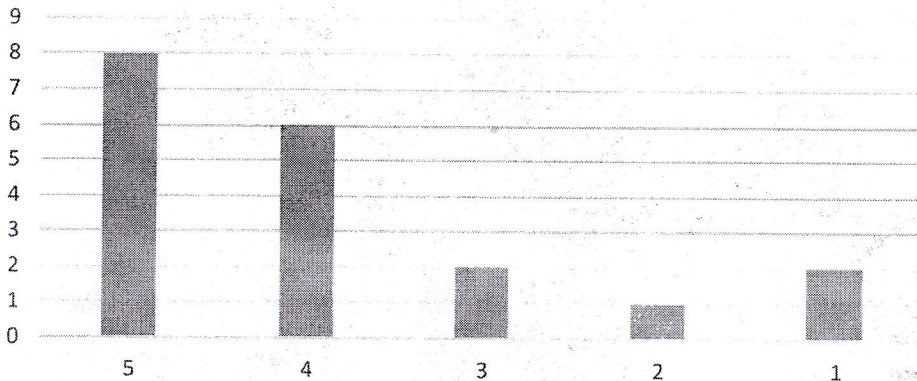
Department of Electrical Engineering

Transport facility feedback

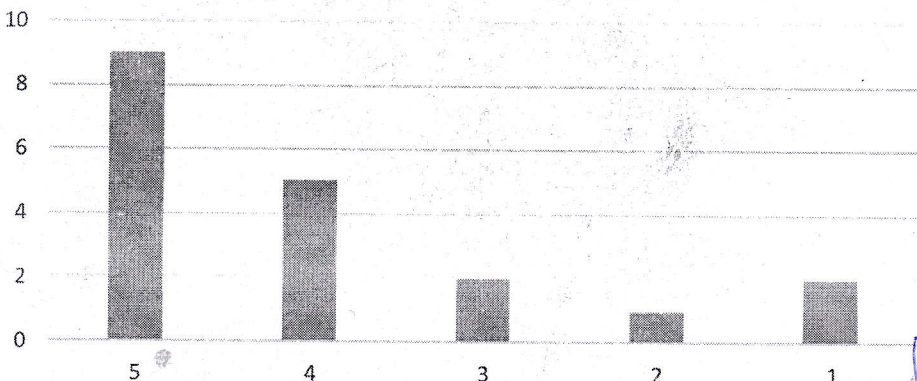
To what extent transport facility at JECRC is dependable and punctual.



To what extent bus drivers demonstrates safe preventive driving skills.



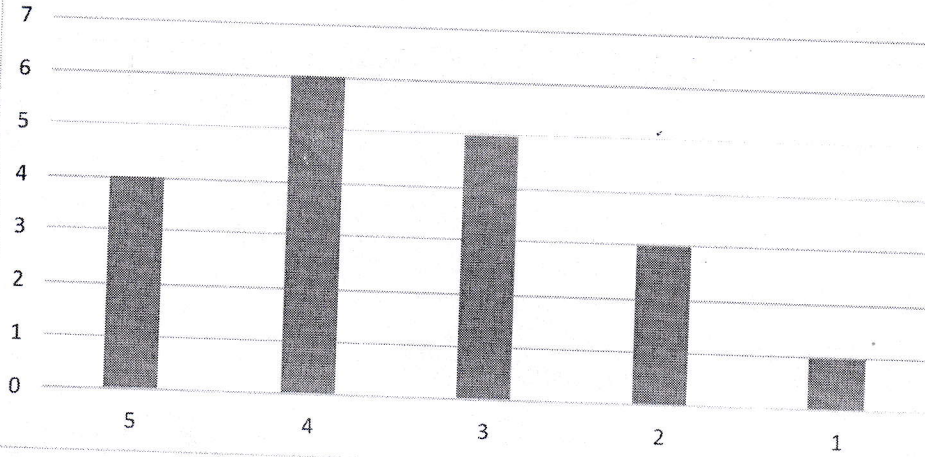
To what extent the drivers maintain proper dress code.



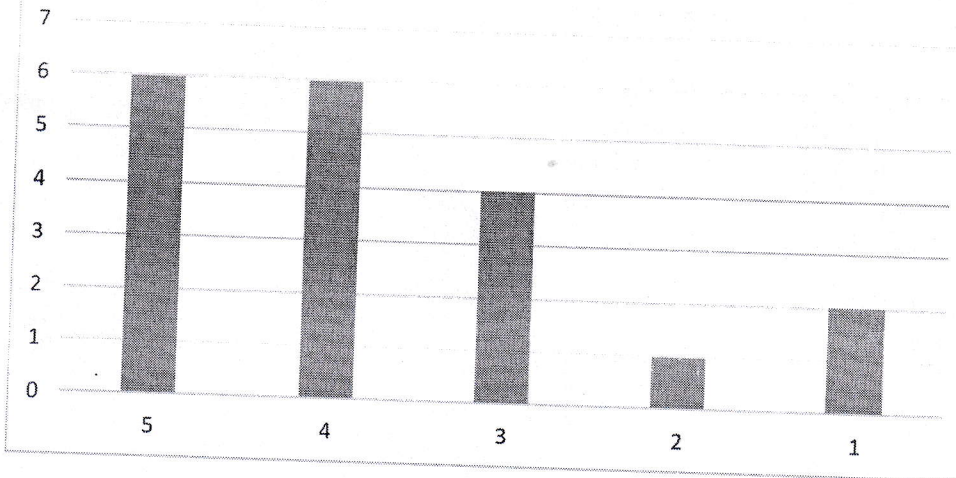
Head of the Department  
Electrical Engineering  
Jaipur

**Department of Electrical Engineering**


How would you rate the cleanliness of the interior and exterior of the vehicle?



To what extent the drivers communicates related to schedule.



**Head of the Department**  
**Electrical Engineering**  
**JECRC, Jaipur**

|  |   |  |
|--|---|--|
| <br>JAIPUR ENGINEERING COLLEGE<br>AND RESEARCH CENTRE | <b>Jaipur Engineering College and Research Centre</b><br><b>Shri Ram ki Nangal, via Sitapura RIICO</b><br><b>Jaipur- 302 022.</b> | <b>Academic year</b><br><b>2020-2021</b> |
| <b>Department of Electrical Engineering</b>  |   |  |


### Action Taken

Feedback forms received from students and its summary are as follows

| Parameters  | Responses |        | Action taken  |
|---|-----------|--------|---|
|   | ≥60       | <60    |   |
| To what extent transport facility at JECRC is dependable and punctual.          | 78.95%    | 21.05% | 78.95% students are agree that the transport facility at JECRC is dependable and punctual, so no action required.   |
| To what extent bus drivers demonstrates safe and preventive driving skills.     | 84.21%    | 15.79% | 84.21% of students are satisfied with the safe and preventive driving skills of bus drivers, so no action required. |
| To what extent the drivers maintain proper dress code.                          | 84.21%    | 15.79% | 84.21% of students rate that the drivers maintain proper dress code, so no action required.                         |
| How would you rate the cleanliness of the interior and exterior of the vehicle? | 78.95%    | 21.05% | 78.95% students are agree with the cleanliness of the interior and exterior of the vehicle, so no action required.  |
| To what extent the drivers communicates related to schedule.                    | 84.21%    | 15.79% | 84.21% of students are satisfied that the drivers communicates related to schedule, so no action required.          |

Dr Prerak Bhardwaj

(HoD EE, JECRC)

  
 Head of the Department  
 Electrical Engineering  
 JECRC Jaipur