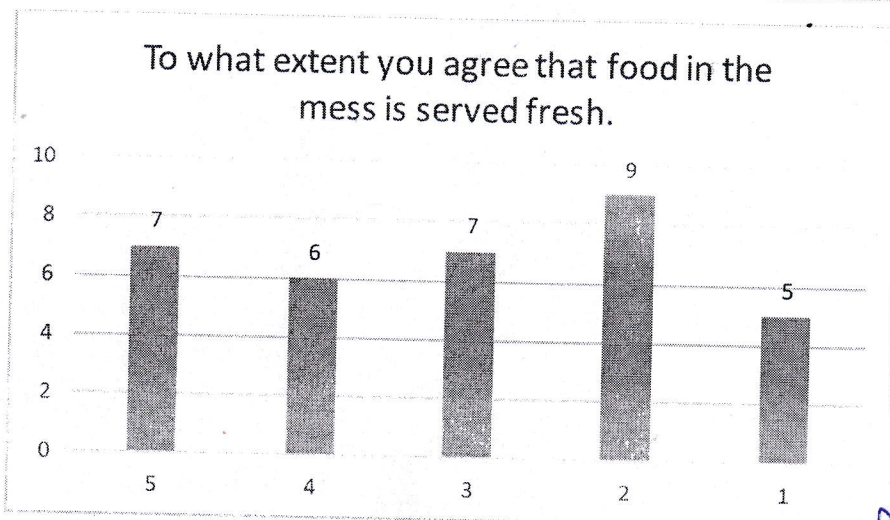
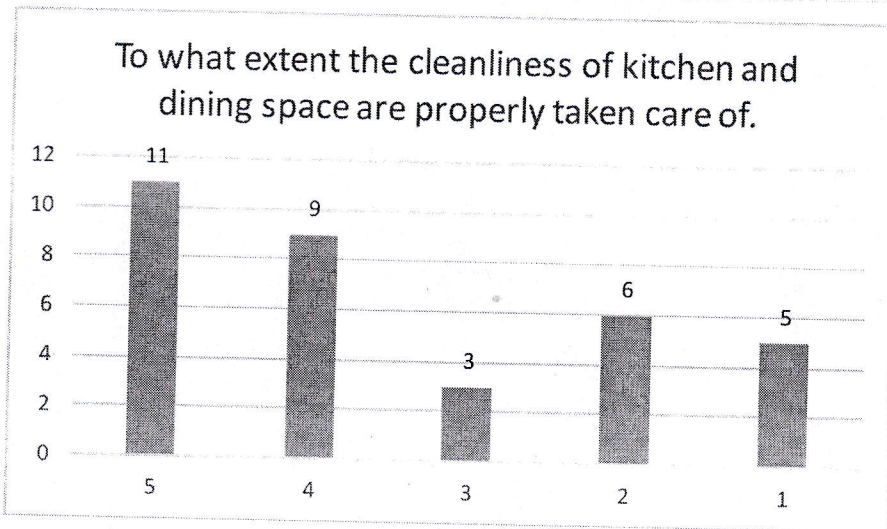
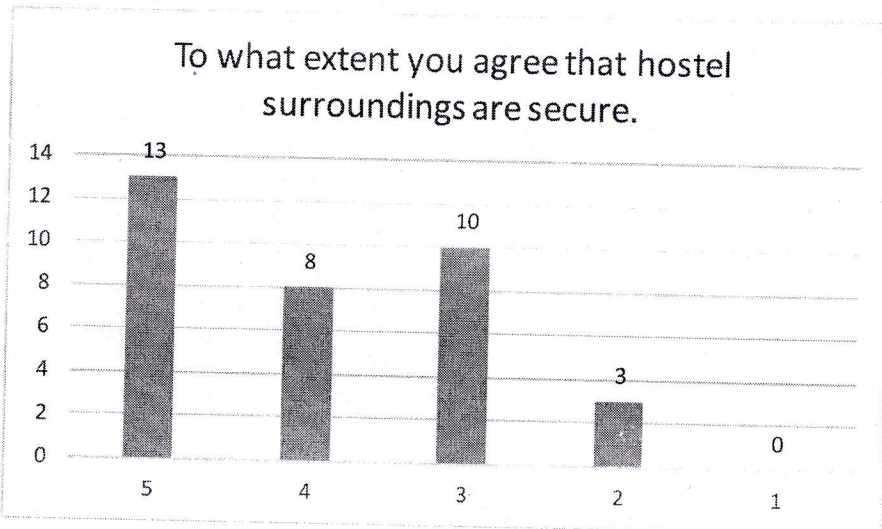


Department of Electrical Engineering

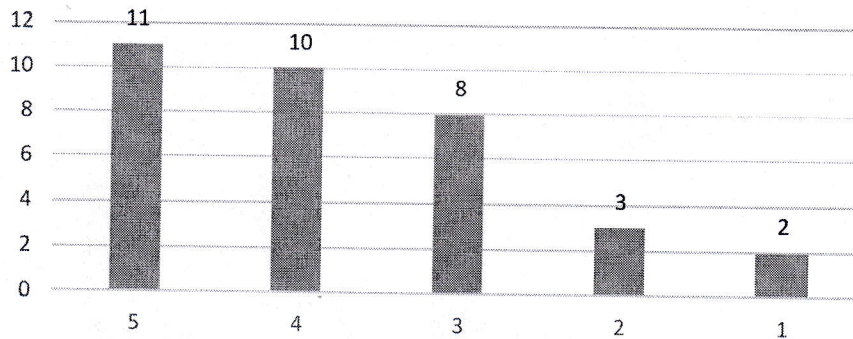
Student's Hostel Facility Feedback



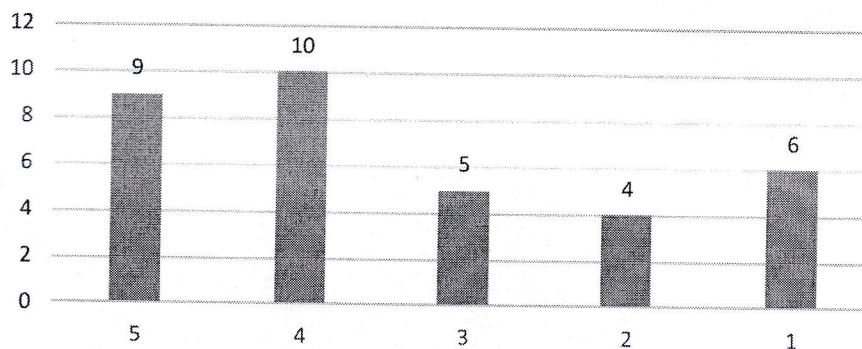
Praveen
Head of the Department
Electrical Engineering
JELRC Jaipur

Department of Electrical Engineering

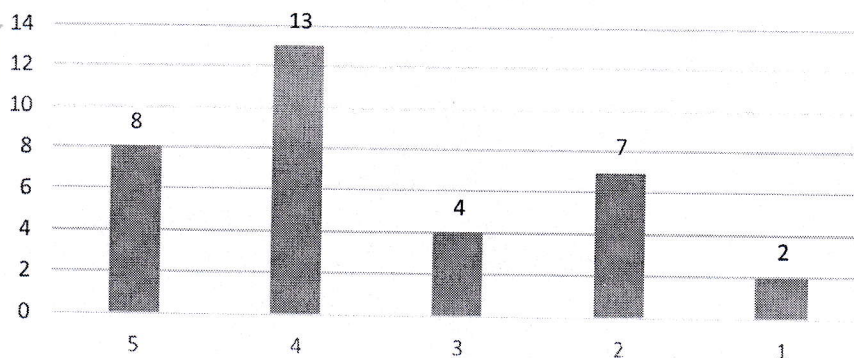
To what extent you agree that timings of mess are properly maintained.



To what extent the Wi-Fi facility is available in the hostel campus.

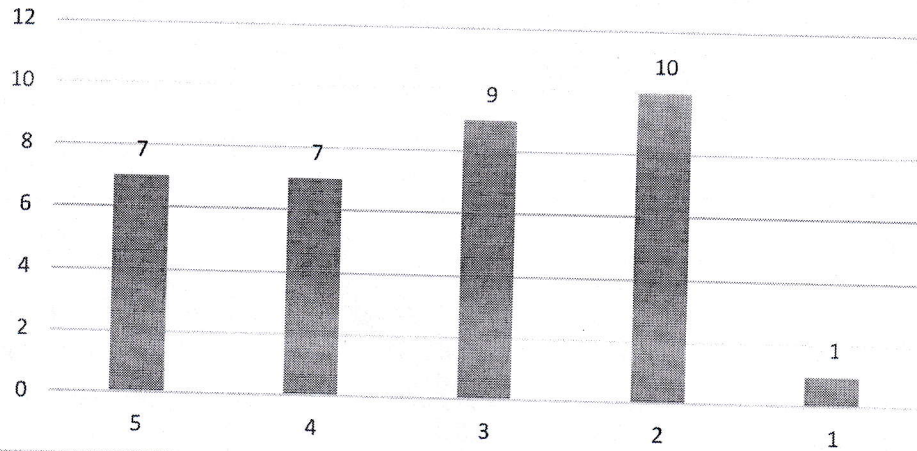


How would you rate the cooperativeness and accessibility of hostel staff?

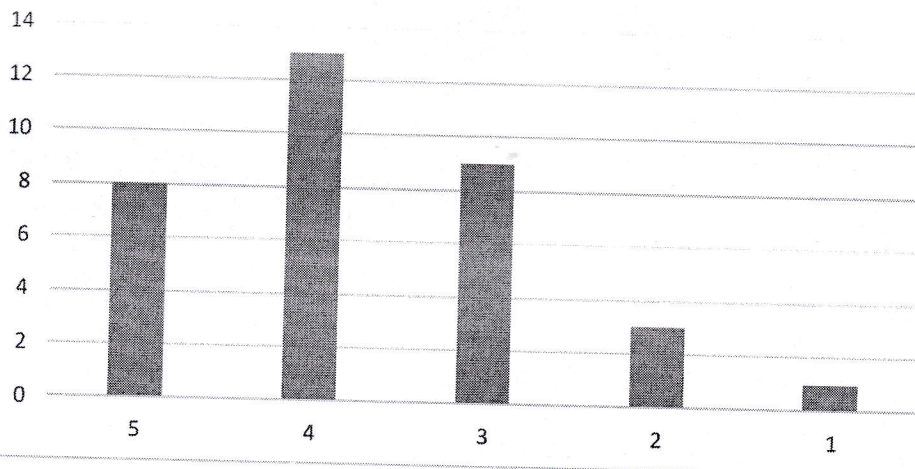


**Head of the Department
Electrical Engineering
JECRC, Jaipur**


How would you rate the menu is properly displayed?



How would you rate Do's and Don'ts are displayed?



Head of the Department
Electrical Engineering
JECRC, Jaipur

 JAIPUR ENGINEERING COLLEGE AND RESEARCH CENTRE	Jaipur Engineering College and Research Centre Shri Ram ki Nangal, via Sitapura RIICO Jaipur- 302 022.	Academic year 2020-2021
Department of Electrical Engineering		

Action Taken

Feedback forms received from students and its summary are as follows

Parameters	Responses		Action taken
	≥60	<60	
To what extent you agree that hostel surroundings are secure.	91.18%	8.82%	91.18% are agree that the surroundings are safe. So no action required.
To what extent the cleanliness of kitchen and dining space are properly taken care of.	67.65%	32.35%	67.65% of students are satisfied with the cleanliness of kitchen and dining space. Suggestions from the students are taken and letter is sent to the care taker of the Hostel in this regard.
To what extent you agree that food in the mess is served fresh.	58.82%	41.18%	58.82% of students are satisfied with the food in the mess is served fresh. Further, suggestions from the students are taken and letter is sent to the care taker of the Hostel in this regard.
To what extent you agree that timings of mess are properly maintained.	85.29%	14.71%	91.18% are timings of mess are properly maintained. Even though we have instructed the hostel in charge to maintain the timing.
To what extent the Wi-Fi facility is available in the hostel campus.	70.59%	29.41%	70.59% of students are satisfied with the Wi-Fi facility. Moreover the letter is sent to the care taker of the hostel to maintain the proper net facility in the hostel.
How would you rate the cooperativeness and accessibility of hostel staff?	73.53%	26.47%	73.53% of students are satisfied with the cooperativeness and accessibility of hostel staff and admired the hostel ambulance facility.
How would you rate the menu is properly displayed?	67.65%	32.35%	67.65% of students are satisfied with the menu is properly displayed. Moreover the letter is sent to the care taker of the hostel in this regard.
How would you rate Do's and Don'ts are displayed?	88.24%	11.76%	88.24% of students are satisfied with Do's and Don'ts displayed.

Dr Prerak Bhardwaj
 (HoD EE, JECRC)

Head of the Department
 Electrical Engineering
 JECRC Jaipur