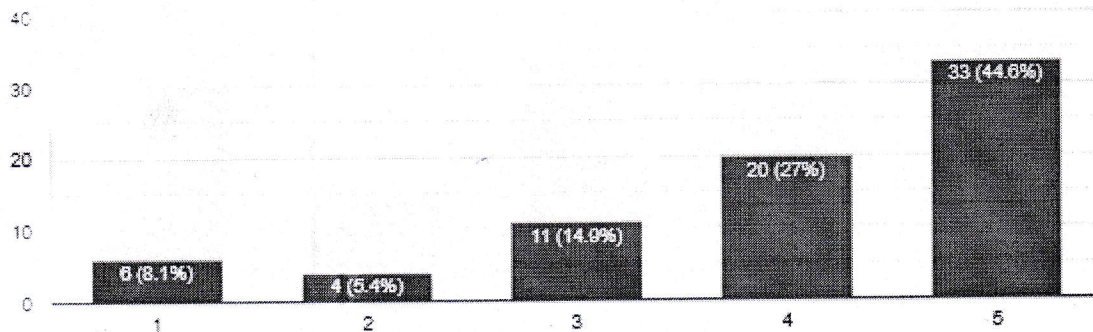


Student's Hostel Facility Feedback Analysis Report

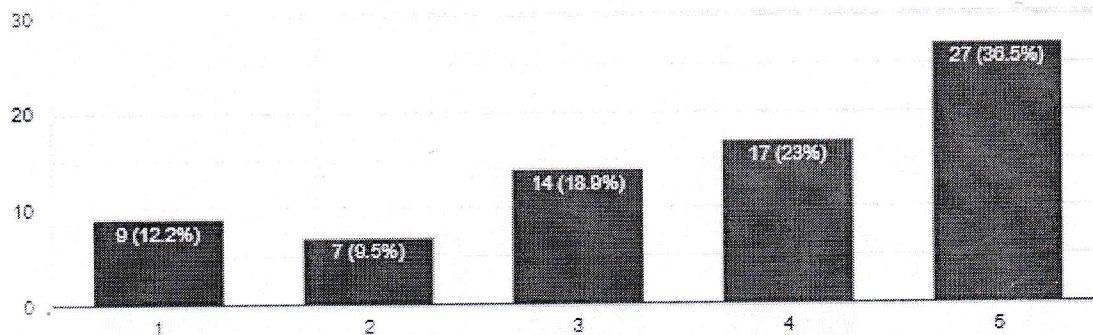
To what extent you agree that hostel surroundings are secure.

74 responses



To what extent the cleanliness of kitchen and dining space are properly taken care of.

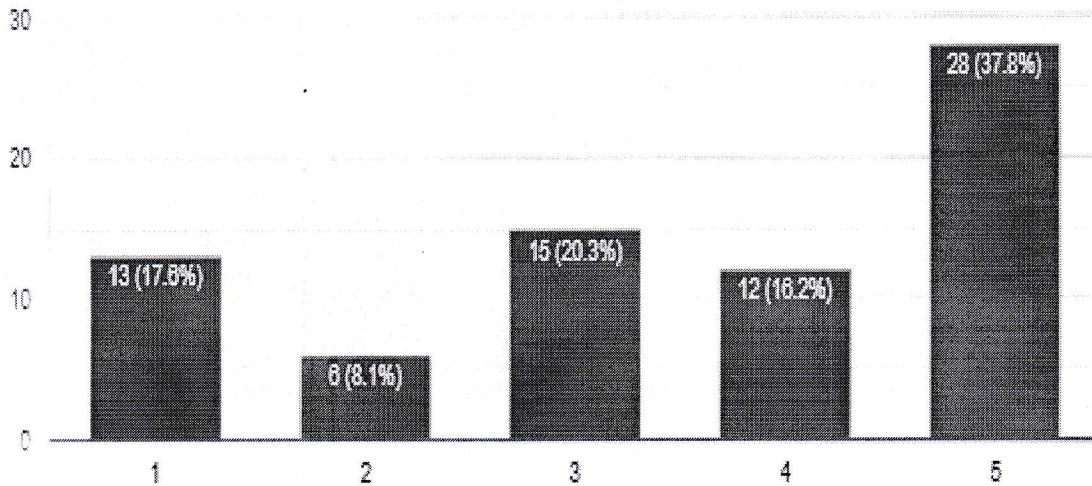
74 responses




Head of the Department
Civil Engineering
JECRC Jaipur

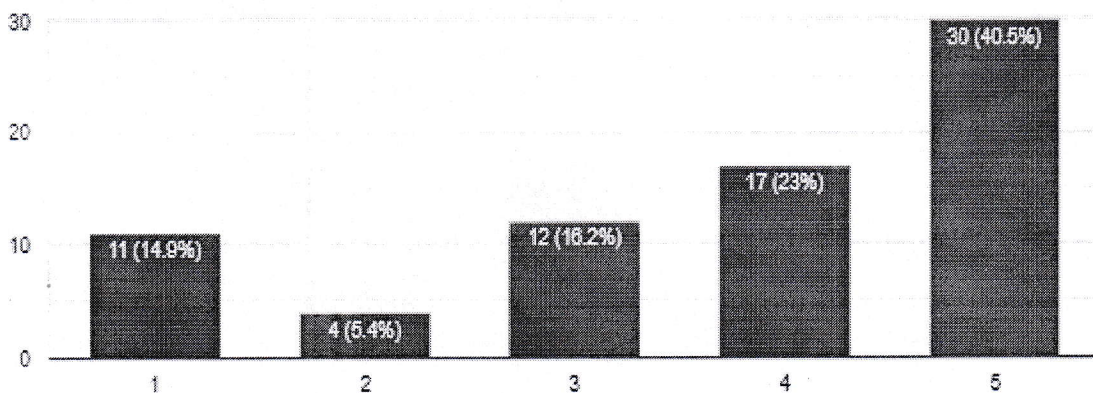
To what extent you agree that food in the mess is served fresh.

74 responses



To what extent you agree that timings of mess are properly maintained.

74 responses




Head of the Department
CIVIL Engineering
JECRC Jaipur



JAIPUR ENGINEERING COLLEGE
AND RESEARCH CENTRE

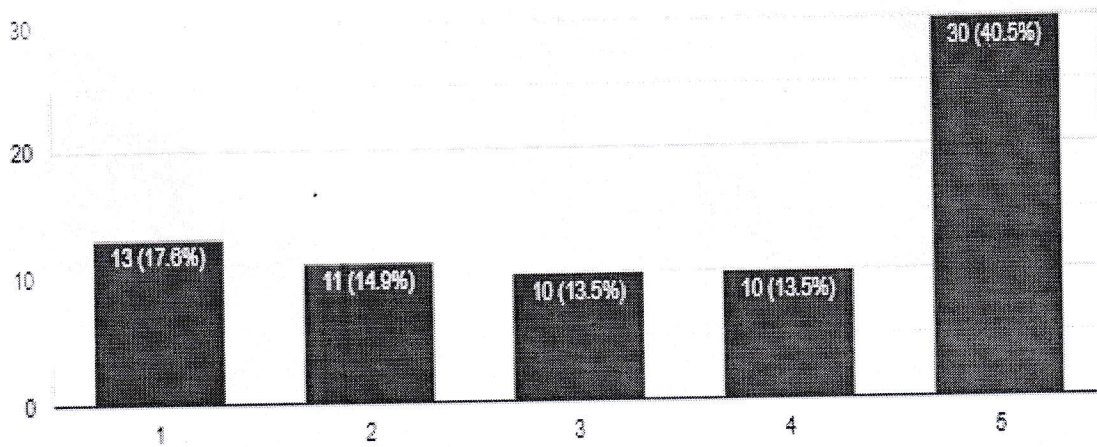
Jaipur Engineering college and research
centre, Shri Ram ki Nangal, via Sitapura
RIICO Jaipur- 302 022.

Academic year- 2020-21

To what extent the Wi-Fi facility is available in the hostel campus

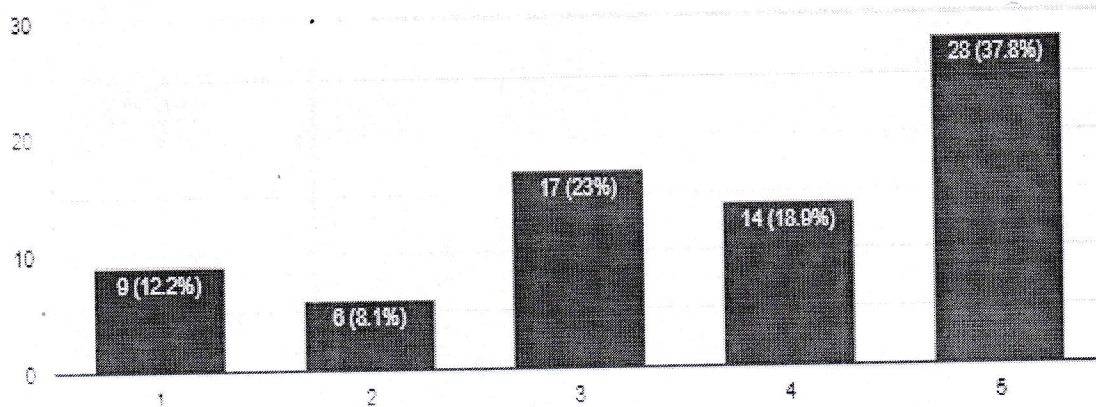



74 responses



How would you rate the cooperativeness and accessibility of hostel staff?

74 responses




Head of the Department
Civil Engineering
JEEERC Jaipur



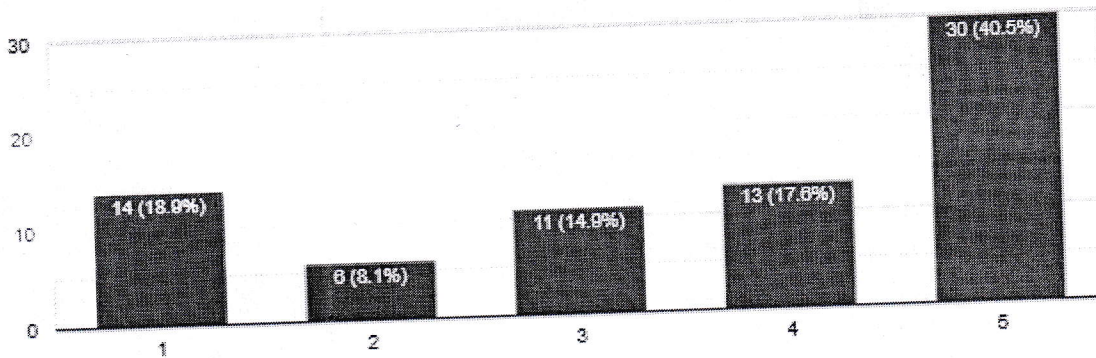
JAIPUR ENGINEERING COLLEGE
AND RESEARCH CENTRE

Jaipur Engineering college and research
centre, Shri Ram ki Nangal, via Sitapura
RIICO Jaipur- 302 022.

Academic year- 2020-21

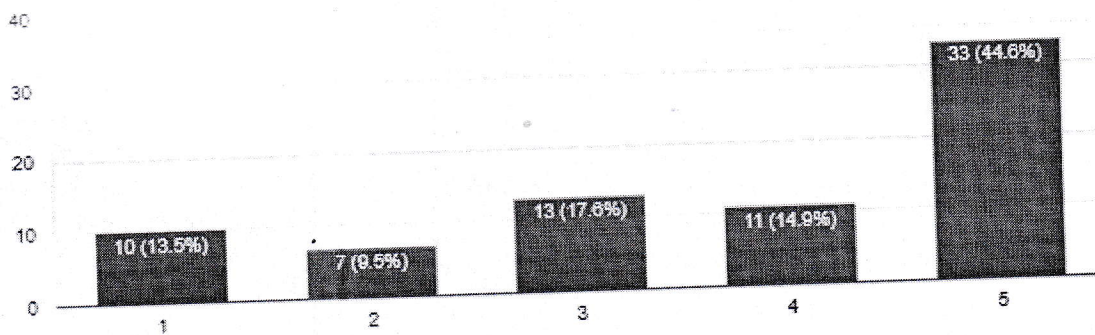
How would you rate the menu is properly displayed?

74 responses




How would you rate Do's and Don'ts are displayed?

74 responses





Head of the Department
Civil Engineering
JECRC Jaipur

 JAIPUR ENGINEERING COLLEGE AND RESEARCH CENTRE	Jaipur Engineering college and research centre, Shri Ram ki Nangal, via Sitapura RIICO Jaipur- 302 022.	Academic year- 2020-21
--	---	-------------------------------

Student's hostel Facility Feedback forms received from students and summary as follows

Parameters	<60%	=>60%	Action taken
To what extent you agree that hostel surroundings are secure.	13.51%	86.48%	More swipers will recruited
To what extent the cleanliness of kitchen and dining space are properly taken care of.	21.62%	78.37%	Modern kitchen will set up
To what extent you agree that food in the mess is served fresh.	25.67%	74.32%	Hot case facility will given
To what extent you agree that timings of mess are properly maintained.	20.27%	79.72%	It will optimized
To what extent the Wi-Fi facility is available in the hostel campus.	32.43%	67.56%	4 G aor 5 G cables will laid
How would you rate the cooperativeness and accessibility of hostel staff?	20.27%	79.72%	Staff will trained
How would you rate the menu is properly displayed?	27.02 %	72.97%	Matched with balanced diet for a young boy / girl
How would you rate Do's and Don'ts are displayed?	22.97 %	77.82%	More awareness will spread


 HOD
 Head of the Department
 Civil Engineering
 JECRC Jaipur