
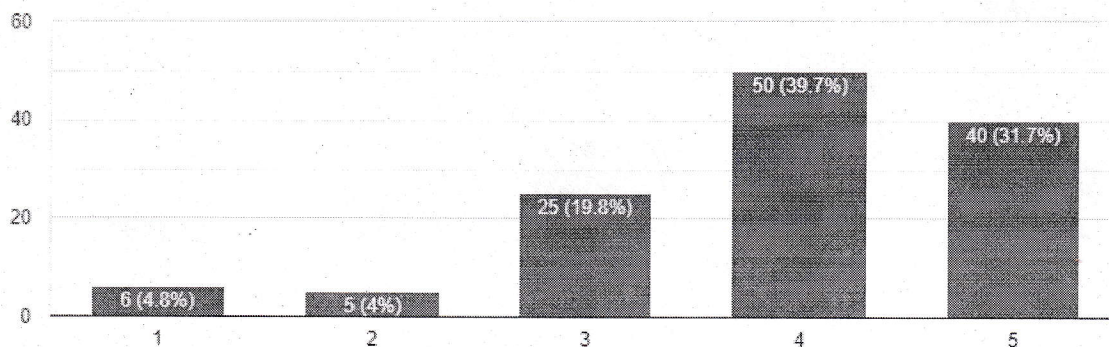


|   |  |                               |
|---|--|-------------------------------|
|  <p>JAIPUR ENGINEERING COLLEGE<br/>AND RESEARCH CENTRE</p> | <p>Jaipur Engineering college and research<br/>centre, Shri Ram ki Nangal, via Sitapura<br/>RIICO Jaipur- 302 022.</p> | <p>Academic year- 2019-20</p> |
|---|--|-------------------------------|

### Student Transport Facility Feedback Analysis Report

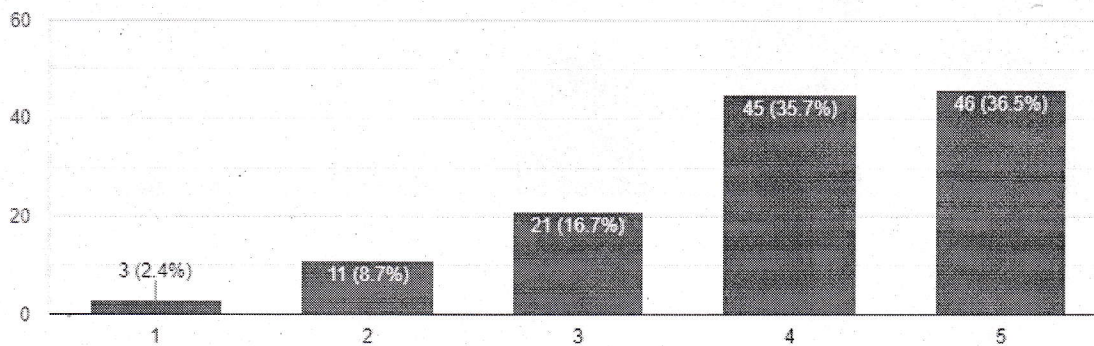
To what extent transport facility at JECRC is dependable and punctual.

126 responses



To what extent bus drivers demonstrates safe and preventive driving skills.

126 responses



*[Signature]*  
Head of the Department  
Civil Engineering  
JECRC Jaipur



JAIPUR ENGINEERING COLLEGE  
AND RESEARCH CENTRE

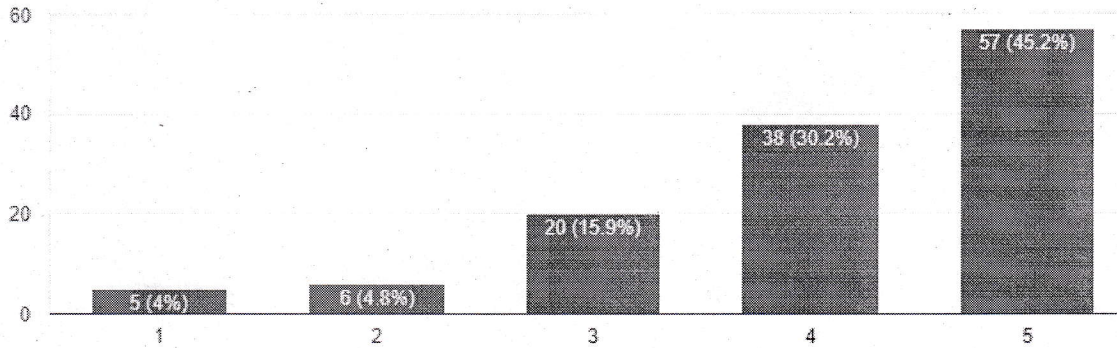
Jaipur Engineering college and research  
centre, Shri Ram ki Nangal, via Sitapura  
RIICO Jaipur- 302 022.

Academic year- 2019-20

To what extent the drivers maintain proper dress code.

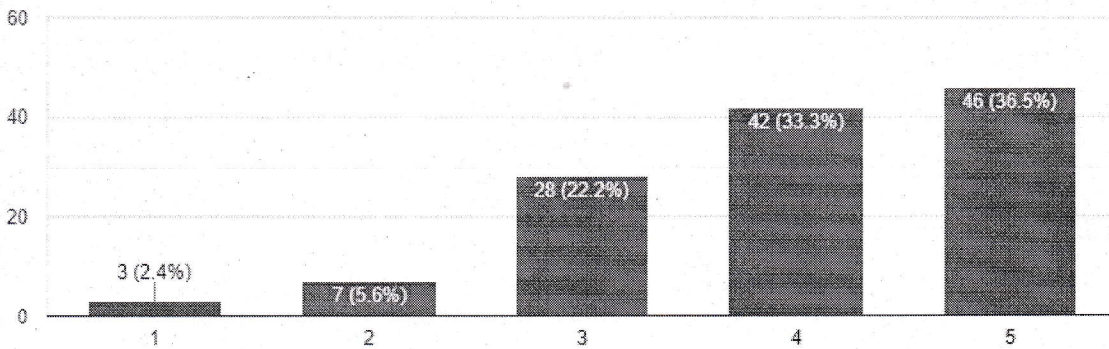


126 responses




How would you rate the cleanliness of the interior and exterior of the vehicle?

126 responses

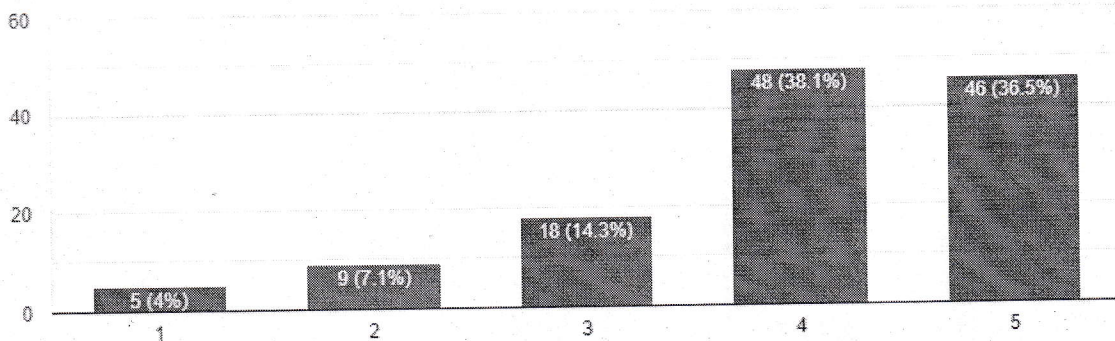


  
Head of the Department  
Civil Engineering  
JECRC Jaipur

|   |  |                               |
|---|--|-------------------------------|
| <br><b>JAI PUR ENGINEERING COLLEGE<br/>AND RESEARCH CENTRE</b> | <b>Jaipur Engineering college and research<br/>centre, Shri Ram ki Nangal, via Sitapura<br/>RIICO Jaipur- 302 022.</b> | <b>Academic year- 2019-20</b> |
|---|--|-------------------------------|

To what extent the drivers communicates related to schedule

126 responses



**Student Transport Facility Feedback forms received from students and summary as follows:**

| Parameters  | <60%   | >=60%  | Action taken   |
|---|--------|--------|--|
| To what extent transport facility at JECRC is dependable and punctual.          | 8.74%  | 91.26% | Drives will trained to use Google Map traffic alert  |
| To what extent bus drivers demonstrates safe and preventive driving skills.     | 11.11% | 88.88% | Drives will trained for smooth driving   |
| To what extent the drivers maintain proper dress code.                          | 8.73%  | 91.26% | Drivers will motivated   |
| How would you rate the cleanliness of the interior and exterior of the vehicle? | 9.37%  | 90.26% | Awareness will provided  |
| To what extent the drivers communicates related to schedule.                    | 11.1%  | 88.8%  | Drivers and travelers both will instructed to use common platform of communication like whatsapp group |

*[Signature]*  
**Head of the Department  
Civil Engineering  
JECRC Jaipur**